

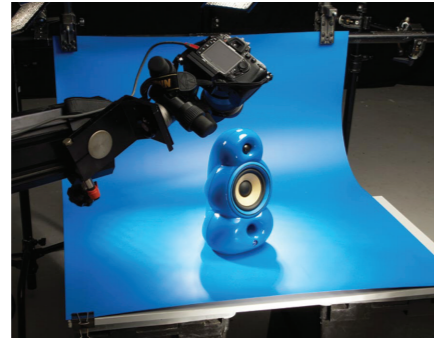


Colorvinyl



Black	2.75 x 6m
White	2.75 x 6m 3.5 x 6m 3.5 x 9m 3.5 x 12m

Colormatt



9700	7100	5047
6400	6900	4550
9010	9270	CM1309*

All colours 1 x 1.3m
*Also available in Colorglass CG1309

Colorvelour



Black	1.32 x 7.3m
-------	-------------

Colorgrad



301
303
312
315
316

All colours 1.1 x 1.7m

Translum



.75 Stop	1.52 x 5.4m
1.5 Stop	1.52 x 5.4m
2 Stop	1.37 x 5.4m

Also available as an assorted pack containing 2 sheets of each density 30 x 30cm

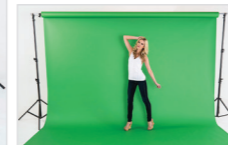
Solo Background support system



3m wide support system LL CO1105



Tiltable bracket LL CO1106



4m wide support system LL CO1142

It's only **Colorama** if it's got **Colorama** on the box!



Resolution Road,
Ashby-de-la-Zouch,
Leicestershire, LE65 1DW, UK.

Phone +44 (0)1530 566090
Fax +44 (0)1530 411515
info@colorama-photo.com
manfrotto.com/colorama



manfrotto.com/colorama



Relax.
We're
behind you.

Rolleasy

- Can be configured to support 2.72 or 3.55m wide rolls.
- Support the weight of 3.55 x 30m paper rolls and 3.50 x 12m vinyl rolls.
- Uses a detachable crank to smoothly raise and lower each background which then automatically locks in to position.
- The system is available as complete kits or as separate components to create a customised system.
- The Rolleasy system allows you to use multiple paper and/or vinyl backgrounds at the same time.

See website for more details.



Rolleasy Background Support



Detachable crank



Multiple backgrounds at the same time

Please visit our website for details manfrotto.com/colorama

Please visit our website for details manfrotto.com/colorama

Please visit our website for details manfrotto.com/colorama

Colorama Range

Colorama background paper

Colorama background papers offer the widest choice of 55 colours. Supplied on a 5.4cm (2 1/8") core.

- 1.35 x 11m** (4 1/2ft x 36ft) available in all colours
- 2.18 x 11m** (7ft x 36ft) in colours marked ■
- 2.72 x 11m** (9ft x 36ft) available in all colours
- 2.72 x 25m** (9ft x 82ft) in colours marked ●
- 2.72 x 50m** (9ft x 164ft) in Arctic White & Polar White



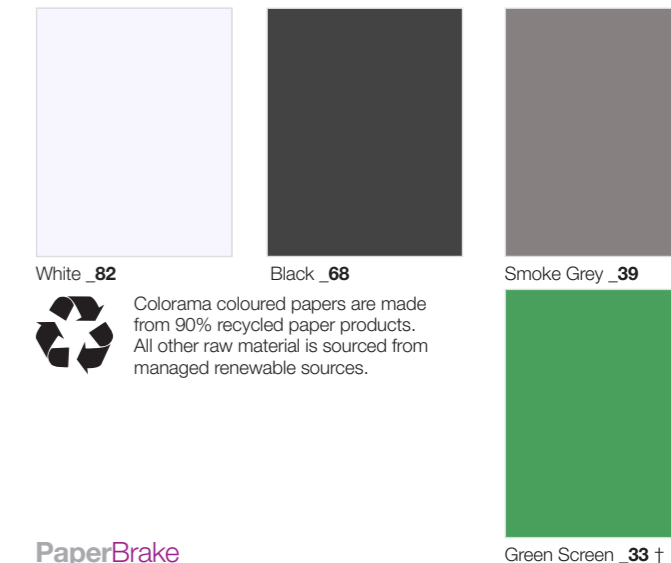
Colours below are available in the following sizes:

3.55 x 15m (12ft x 49ft)

Supplied on a 6.35cm (2 1/2") core.

3.55 x 30m (12ft x 98ft)

Supplied on a 6.35cm (2 1/2") core. 5.4cm (2 1/8") core diameter is available on request.



White _82

Black _68

Smoke Grey _39



Colorama coloured papers are made from 90% recycled paper products. All other raw material is sourced from managed renewable sources.

PaperBrake



Slide into existing 5.4cm diameter cardboard core to allow paper to be pulled down in controlled gradual steps instead of rotating freely on the crossbar. LL COBRAKE

Colorgrip



Flexible polyurethane unit that holds up to 12 rolls of Colorama paper upright against a wall. LL COPAPERGRIP

† Chromablue and Chromagreen (1.35 and 2.72m width) and Green Screen (3.55m width) are special shades in the Colorama range, manufactured to achieve a colour as close as possible to Chromakey colours, within the limitations of paper manufacture.

†† Granite is suitable for use when 18% grey is required. Although every effort is made to ensure consistency of product, the paper production process may cause slight variations in colour. The texture and lighting of the surface can influence the final appearance of the colour.