

Main specifications of **α6400**

General	Camera type	Interchangeable-lens digital camera
	Lens mount	E-mount
Image sensor	Type	APS-C type (23.5 x 15.6mm) Exmor CMOS sensor
	Number of pixels (effective)	Approx. 24.2 megapixels
	Number of pixels (total)	Approx. 25.0 megapixels
	Image sensor aspect ratio	3:2
	Anti-dust system	Yes
Recording system (still images)	Recording Format	JPEG (DCF Ver. 2.0, Exif Ver. 2.31, MPF Baseline compliant), RAW (Sony ARW 2.3 format)
	Image size (pixels)	3:2 aspect ratio L: 6000 x 4000 (24M), M: 4240 x 2832 (12M), S: 3008 x 2000 (6.0M) 16:9 aspect ratio L: 6000 x 3376 (20M), M: 4240 x 2400 (10M), S: 3008 x 1688 (5.1M) 1:1 aspect ratio L: 4000 x 4000 (16M), M: 2832 x 2832 (8.0M), S: 2000 x 2000 (4.0M) Sweep Panorama Wide: horizontal 12416 x 1856 (23M), vertical 5536 x 2160 (12M), Standard: horizontal 8192 x 1856 (15M), vertical 3872 x 2160 (8.4M)
	Image quality modes	RAW, RAW & JPEG (Extra fine, Fine, Standard), JPEG (Extra fine, Fine, Standard)
	RAW output	14 bit
	Picture Effect	13 types: Posterization (Color), Posterization (B/W), Pop Color, Retro Photo, Partial Color (R/G/B/Y), High Contrast Monochrome, Toy Camera (Normal/Cool/Warm/Green/Magenta), Soft High-Key, Soft Focus (High/Mid/Low), HDR Painting (High/Mid/Low), Rich-tone Monochrome, Miniature (Auto/Top/Middle (H)/Bottom/Right/Middle (V)/Left), Watercolor, Illustration (High/Mid/Low)
	Creative Style	Standard, Vivid, Neutral, Clear, Deep, Light, Portrait, Landscape, Sunset, Night Scene, Autumn leaves, Black & White, Sepia, Style Box (1-6), (Contrast [-3 to +3 steps], Saturation [-3 to +3 steps], Sharpness [-3 to +3 steps])
	Dynamic range functions	Off, Dynamic Range Optimizer (Auto/Level [1-5]), Auto High Dynamic Range (Auto Exposure Difference, Exposure Difference Level (1-6 EV, 1.0 EV step))
	Color space	sRGB standard (with sYCC gamut) and Adobe RGB standard compatible with TRILUMINOS Color
Recording system (movies)	Recording Format	XAVC S / AVCHD format Ver. 2.0 compliant
	Video compression	XAVC S: MPEG-4 AVC/H.264 AVCHD: MPEG-4 AVC/H.264
	Audio recording format	XAVC S: LPCM 2ch AVCHD: Dolby Digital (AC-3), 2ch, Dolby Digital Stereo Creator
	Image size (pixels)	NTSC XAVC S 4K: 3840 x 2160 (30p, 100M), 3840 x 2160 (24p, 100M), 3840 x 2160 (30p, 60M), 3840 x 2160 (24p, 60M) XAVC S HD: 1920 x 1080 (120p, 100M), 1920 x 1080 (120p, 60M), 1920 x 1080 (60p, 50M), 1920 x 1080 (30p, 50M), 1920 x 1080 (24p, 50M), 1920 x 1080 (60p, 25M), 1920 x 1080 (30p, 16M) AVCHD: 1920 x 1080 (60p/28Mbps/PS, 60i/24Mbps/FX, 60i/17Mbps/FH, 24p/24Mbps/FX, 24p/17Mbps/FH) PAL XAVC S 4K: 3840 x 2160 (25p, 100M), 3840 x 2160 (25p, 60M) XAVC S HD: 1920 x 1080 (100p, 100M), 1920 x 1080 (100p, 60M), 1920 x 1080 (50p, 50M), 1920 x 1080 (25p, 50M), 1920 x 1080 (50p, 25M), 1920 x 1080 (25p, 16M) AVCHD: 1920 x 1080 (50i, 24M, FX), 1920 x 1080 (50i, 17M, FH)
	Slow & Quick motion (S&Q) Record Setting	NTSC mode: 1920x1080 (60p, 30p, 24p) PAL mode: 1920x1080 (50p, 25p)
	Slow & Quick motion (S&Q) Frame Rate	NTSC mode: 1fps, 2fps, 4fps, 8fps, 15fps, 30fps, 60fps, 120fps PAL mode: 1fps, 2fps, 3fps, 6fps, 12fps, 25fps, 50fps, 100fps
	Picture Profile	Yes (Off / PPT-PP10) Parameters: Black level, Gamma (Movie, Still, Cine1-4, ITU709, ITU709 [800%], S-Log2, S-Log3, HLG, HLG1-3), Black Gamma, Knee, Color Mode, Saturation, Color Phase, Color Depth, Detail, Copy, Reset
	Movie functions	Audio Level Display, Audio Rec Level, PAL/NTSC Selector, Proxy Recording (1280 x 720 (Approx. 9Mbps)), TC/UB (TC Preset/UB Preset/TC Format/TC Run/TC Make/UB Time Rec), Auto Slow Shutter, REC Control, Clean HDMI Info. (ON/OFF selectable), Gamma Disp. Assist
	Color space	xyYCC standard (x,y Color when connected via HDMI cable) compatible with TRILUMINOS Color
Clean HDMI output		3840 x 2160 (30p), 3840 x 2160 (25p), 3840 x 2160 (24p), 1920 x 1080 (60p), 1920 x 1080 (60i), 1920 x 1080 (50p), 1920 x 1080 (50i), 1920 x 1080 (24p), YCbCr 4:2:2 8-bit / RGB 8bit
Media	Media	Memory Stick PRO Duo, Memory Stick PRO-HG Duo, Memory Stick Micro (M2), SD memory card, SDHC memory card (UHS-I compliant), SDXC memory card (UHS-I compliant), microSD memory card, microSDHC memory card, microSDXC memory card
	Slot	Multi slot for Memory Stick Duo/ SD memory card
Noise reduction	Noise reduction	Long exposure NR: On/Off, available at shutter speeds longer than 1 sec., High ISO NR: Normal/Low/Off
	Multi Frame NR	Auto/ ISO 100 to 102400
White balance	Modes	Auto / Daylight / Shade / Cloudy / Incandescent / Fluorescent (Warm White / Cool White / Day White / Daylight) / Flash / Underwater / Color Temperature (2500 to 9900K) & color filter (G7 to M7 (57-step), A7 to B7 (29-step)) / Custom
	AWB micro adjustment	G7 to M7 (57-step), A7 to B7 (29-step)
	Priority Set in AWB	Yes
	Shutter AWB lock	Yes (Shut. Halfway Down/ Cont. Shooting/ Off)
	Bracketing	3 frames, H/L selectable
Focus system	Type	Fast Hybrid AF (phase-detection AF/contrast-detection AF) ¹
	Focus point	425 points (phase-detection AF) / 425 points (contrast-detection AF)
	Sensitivity range	EV-2 to EV20 (ISO 100 equivalent with F2.0 lens attached)
	AF modes	Automatic AF (AF-A), Single-shot AF (AF-S), Continuous AF (AF-C), Direct Manual Focus (DMF), Manual Focus
	Focus area	Wide (425 points (phase-detection AF), 425 points (contrast-detection AF)) / Zone / Center / Flexible Spot (S/M/L) / Expanded Flexible Spot / Tracking (Wide / Zone / Center / Flexible Spot (S/M/L) / Expanded Flexible Spot)
	Focus type with LA-EA3 (sold separately)	Phase-detection/contrast-detection selectable
	Other features	Eye-start AF (only with LA-EA2 or LA-EA4 attached (sold separately)), Object Tracking, Eye AF (Right/Left Eye Select), AF micro adjustment with LA-EA2 or LA-EA4 (sold separately), Predictive control, Focus lock, Swt.V/H AF Area, AF Area Regist., Circ. of Focus Point
Exposure control	Metering type	1200-zone evaluative metering
	Metering sensor	Exmor CMOS sensor
	Metering sensitivity	EV-2 to EV20 (at ISO 100 equivalent with F2.0 lens attached)
	Metering modes	Multi-segment, Center-weighted, Spot (Standard/Large), Entire Screen Avg., Highlight
	Exposure modes	AUTO (iAuto/Superior Auto), Programmed AE (P), Aperture priority (A), Shutter-speed priority (S), Manual (M), Movie (Programmed AE (P) / Aperture priority (A) / Shutter-speed priority (S) / Manual (M)), Slow & Quick Motion (Programmed AE (P) / Aperture priority (A) / Shutter-speed priority (S) / Manual (M)), Sweep Panorama, Scene Selection
	Scene Selection	Portrait, Sports Action, Macro, Landscape, Sunset, Night Scene, Hand-held Twilight, Night Portrait, Anti Motion Blur
	Exposure compensation	+/-5.0 EV (in 1/3 EV or 1/2 EV steps)
	AE bracketing	Bracket: Single/Bracket: Cont., 3/5/9 frames selectable. With 3 or 5 frames, in 1/3, 1/2, 2/3, 1.0, 2.0 or 3.0 EV increments, with 9 frames, in 1/3, 1/2, 2/3 or 1.0 EV increments.
	AE lock	Available with AE Lock button. Locked when shutter button is pressed halfway
	ISO sensitivity (Recommended Exposure Index)	Still images: ISO 100-32000 (ISO numbers up to ISO 102400 can be set as expanded ISO range.), AUTO (ISO 100-6400, selectable lower limit and upper limit), Movies: ISO 100-32000 equivalent, AUTO (ISO 100-6400, selectable lower limit and upper limit)

¹Phase-detection AF may not work with certain lenses or may require lens software update. See Sony support page for details. ²With compatible Sony external flash. ³With compatible external flash. ⁴Varies according to shooting conditions or memory card used. ⁵In the case of this model, when using Continuous Shooting (Hi+) in Drive mode. ⁶Supports Micro USB compatible device. ⁷(Configuration method/Access method) WPS or manually /infrastructure mode. When connecting to smartphones, the camera can always work as a base without a wireless access point. (Security: WEP/WPA-PSK/WPA2-PSK) ⁸Sony accessories for the Accessory Shoe can be attached. ⁹The LCD screen is turned on, shot once every 30 seconds, operate zoom alternately between W and T ends, flash strobe once every two times, turn power off and on once every ten times. ¹⁰Indication recording time, which is defined by repeating the cycle: Power on, start recording, zoom, stand-by and power off. ¹¹The total movie recording time.

http://www.sony.net/digitalimaging/

Trademarks & Remarks

• **α**: "Exmor", "BIONZ X", "BRAVIA", "InfoLithium", "Translucent Mirror Technology", "Tru-Finder", "Memory Stick", "Memory Stick PRO Duo", "Memory Stick PRO-HG Duo", "PlayMemories Home", "x.v.Color", "TRILUMINOS", "TRILUMINOS Color", "TRILUMINOS Display", "XAVC S" and "Imaging Edge" are trademarks or registered trademarks of Sony Corporation. • "Xperia" is a trademark or registered trademark of Sony Mobile Communications AB. • "AVCHD" and "MPEG" are trademarks of Panasonic Corporation and Sony Corporation. • The SD Logo, SDHC Logo and SDXC Logo are trademarks of SD-3C, LLC. • The terms HDMI and HDMI High-Definition Multimedia Interface, and the HDMI Logo are trademarks or registered trademarks of HDMI Licensing Administrator, Inc. in the United States and other countries. • The Wi-Fi Protected Setup Identifier Mark is a mark of the Wi-Fi Alliance. • N-Mark is a registered trademark of the NFC Forum. • Dolby is a trademark of Dolby Laboratories. • WhiteMagic is a trademark of Japan Display Inc. • App Store is a service mark of Apple Inc. • Android, Google Play and Google Play logo are trademarks or registered trademarks of Google Inc. • iPad is a trademark of Apple Inc., registered in the U.S. and other countries. • All other company and product names mentioned herein are used for identification purposes only and may be the trademarks or registered trademarks of their respective owners. • InfoLithium™ is a lithium battery pack which can exchange data with compatible electronic equipment about its energy consumption. • Sony recommends that you use the battery pack with electronic equipment bearing the "InfoLithium" mark. • Screen displays and effects used to illustrate some functions are simulated. • For use of other companies' services and software, 1) other conditions for use may be applied. 2) updating of services and software may be stopped/terminated without prior notice. 3) the contents of services and software may be changed without prior notice. 4) other registrations or payments of other fees may be required.

Specifications and features are subject to change without notice. Product availability varies depending on market.

Viewfinder	Type	XGA OLED, 1.0cm (0.39 type) electronic viewfinder (color)
	Total number of dots	2,359,296 dots
	Brightness control	Auto/Manual (5 steps between -2 and +2)
	Color temperature control	Manual (5 steps)
	Field coverage	100%
	Magnification	Approx. 1.07x (35mm camera equivalent: Approx. 0.70x) with 50mm lens at infinity, -1m ⁻¹
	Diopter adjustment	-4.0 to +3.0m ⁻¹
	Eye point	Approx. 23mm from the eyepiece lens, 21.4mm from the eyepiece frame at -1m ⁻¹ (CIPA standard)
	Display	Graphic Display, Display All Info., No Disp. Info., Digital Level Gauge, Histogram
	Real-time image-adjustment display	On/Off
	Finder Frame Rate selection	NTSC mode: STD 60fps / HI 120fps, PAL mode: STD 50fps / HI 100fps
LCD Screen	Type	7.5cm (3.0-type) wide type TFT
	Total number of dots	921,600 dots
	Touch Panel	Yes
	Touch Focus	Yes (Touch Panel/ Touch Pad)
	Brightness control	Manual (5 steps between -2 and +2), Sunny Weather mode
	Adjustable angle	Up by approx. 180 degrees. Down by approx. 74 degrees
	Display	Graphic Display, Display All Info., No Disp. Info., Digital Level Gauge, Histogram, For viewfinder, Monitor Off
	Real-time image-adjustment display	On/Off
	Focus magnifier	5.9x, 11.7x
	Zebra	Yes (selectable level + range or lower limit as custom setting)
	Peaking MF	Yes (Level setting: High/Mid/Low/Off, Color: White/Red/Yellow/Blue)
Other features	Interval Recording	Yes (1-60 sec. interval, 1-9999 shots, AE tracking)
	Face detection	Face Priority in AF (On/Off), Face Priority in Multi Metering (On/Off), Registered face priority (On/Off), Face registration (Max. number of detectable faces: 8)
	Auto Object Framing	Yes
	Clear Image Zoom	Still images: Approx. 2x, Movies: Approx. 1.5x (4K), Approx. 2x (HD)
	Digital zoom	Smart zoom (still images) M: Approx. 1.4x, S: Approx. 2.0x Digital zoom (still images) L: Approx. 4x, M: Approx. 5.7x, S: Approx. 8x Digital zoom (movies) Approx. 4x
	Lens compensation	Peripheral Shading, Chromatic Aberration, Distortion
	Others	Smile Shutter: Smile shutter (selectable from 3 steps), Touch Shutter, Touch Focus: Yes (Touch Focus/Touch Pad/Touch Tracking), ISO AUTO Min. S5, Bright Monitoring, Copyright Info, Set File Name, Help guide, Area Setting, Shop Front Mode, Zoom Ring Rotate, Still images
Shutter	Type	Electronically controlled, vertical-traverse, focal-plane type
	Shutter Speed	Still images: 1/4000 to 30 sec., Bulb Movies: 1/4000 to 1/4 (1/3-step) NTSC: Up to 1/60 in AUTO mode (up to 1/30 in Auto Slow Shutter mode) PAL: Up to 1/50 in AUTO mode (up to 1/25 in Auto Slow Shutter mode)
	Flash sync. speed	1/160 sec. ²
	Electronic front curtain shutter	Yes, On/Off
	Silent Shooting	Yes, On/Off
Flash Control	Control	Built-in flash
	Guide No.	6 (in meters at ISO 100)
	Flash coverage	16mm (focal-length printed on the lens body)
	Control	Pre-flash TTL
	Flash compensation	+/-3.0 EV (switchable between 1/3 and 1/2 EV steps)
	Flash bracketing	3/5/9 frames selectable. With 3 or 5 frames, in 1/3, 1/2, 2/3, 1.0, 2.0, 3.0 EV increments, with 9 frames, in 1/3, 1/2, 2/3, 1.0 EV increments.
	Flash modes	Flash off, Autoflash, Fill-flash, Slow Sync., Rear Sync., Red-eye reduction (On/Off selectable), Wireless control ³ , Hi-speed sync. ⁴
	Recycling time	Approx. 4 sec.
	External flash	Sony α System Flash compatible with Multi Interface Shoe. Attach the shoe adaptor for flash compatible with Auto-lock Accessory Shoe.
	FE level lock	Yes
	Wireless control	Yes (Light signal: Available with Fill-flash, Slow Sync., Hi-speed sync. /Radio signal: Available with Fill-flash, Rear Sync., Slow Sync., Hi-speed sync.)
Drive	Drive modes	Single Shooting, Continuous shooting (Hi+/Hi/Mid/Lo selectable), Self-timer, Self-timer (Cont.), Bracket: Single, Bracket: Cont., White Balance bracket, DR0 bracket
	Self-timer	10 sec. delay/5 sec. delay/2 sec. delay/Continuous self-timer (3 frames after 10 sec. delay/5 frames after 10 sec. delay/3 frames after 5 sec. delay/5 frames after 5 sec. delay/3 frames after 2 sec. delay/5 frames after 2 sec. delay)/Bracketing self-timer (Off/2 sec. delay/5 sec. delay/10 sec. delay)
	Speed (approx., max.) ⁵	Continuous shooting: Hi+: 11 fps, Hi: 8 fps, Mid: 6 fps, Lo: 3 fps
	No. of recordable frames ⁶ (approx.)	JPEG Extra fine L: 99 frames, JPEG Fine L: 115 frames, JPEG Standard L: 116 frames, RAW: 46 frames, RAW & JPG: 44 frames
Playback	Modes	Single (with or without shooting information Y RGB histogram & highlight/shadow warning), 12/30-frame index view, Enlarged display mode (L: 16.7x, M: 11.8x, S: 8.3x, Panorama (Standard): 19.2x, Panorama (Wide): 29.1x), Auto Review (10/5/2 sec. Off), Image orientation (Auto/Manual/Off selectable), Slideshow, Panorama scrolling, Folder selection (Date/Still/ AVCHD/XAVC S HD/XAVC S 4K), Forward/Rewind (movie), Delete, Protect, Rating, Disp Cont Shoot Grp
Interface	PC interface	Mass-storage, MTP, PC remote
	Multi / Micro USB Terminal	Yes ⁷
	Wireless LAN (built-in)	Wi-Fi Compatible, IEEE802.11b/g/n (2.4GHz band) ⁸ , Playback of still images and movies on smartphones, PCs and TVs
	NFC ⁹	Yes (NFC Forum Type 3 Tag compatible, One-touch remote, One-touch sharing)
	Bluetooth	Yes (Bluetooth Standard Ver. 4.1 (2.4GHz band))
	HD output	HDMI micro connector (Type-D), BRAVIA Sync (link menu), PhotoTV HD, 4K movie output, 4K still image playback
	Multi Interface Shoe	Yes ⁸
	Others	Microphone terminal (3.5mm Stereo minijack)
Audio	Microphone	Built-in stereo microphone or XLR-K2M / XLR-K1M / ECM-XYST1M (sold separately)
	Speaker	Built-in, monaural
Print	Compatible standards	Exif Print, Print Image Matching III, DP0F setting
Custom function	Type	Custom key settings, Programmable Setting (Body 3 sets / memory card 4 sets), My Menu, My Dial, Req Cust Shoot Set
Power	Battery	Rechargeable battery pack NP-FW50
	Still images	Approx. 360 shots (Viewfinder) / Approx. 410 shots (LCD monitor) (CIPA standard) ¹⁰
	Movies	Approx. 70 min (Viewfinder) / Approx. 75 min (LCD monitor) (CIPA standard) ¹⁰ Approx. 125 min (Viewfinder) / Approx. 125 min (LCD monitor) (CIPA standard) ¹¹
	External power	AC Adaptor AC-FW20 (sold separately)
Weight	With battery and Memory Stick PRO Duo	Approx. 403g (approx. 14.3 oz.)
	Body only	Approx. 359g (approx. 12.7 oz.)
Dimensions	W x H x D (excluding protrusions)	Approx. 120.0mm x 66.9mm x 59.7mm, Approx. 120.0mm x 66.9mm x 49.9mm (from grip to monitor) / Approx. 4 3/4 x 2 3/4 x 2 3/8 inches, Approx. 4 3/4 x 2 3/4 x 2 inches (from grip to monitor)
Operating temperature	Range	32°-104°F / 0-40°C

SONY

Interchangeable-lens
digital camera

α6400





Grab the best of life.

Despite its compact size and light weight, the smart, new-era **α6400** delivers the speedy performance and intelligent features that you'd expect from a full-frame model. Whether it's for still shots or movies, creative compositions or everyday selfie shots, you'll enjoy beautiful images that you'll want to share. Super-fast AF and highly precise subject tracking make it ideal for capturing fast-moving action, while its wide sensitivity range and stunning image quality make it perfect for just about any photographic opportunity you may encounter.

APS-C Size 24.2 Mega pixels	ISO 100-32000	11 Frames Per Sec	Phase Detection 425 AF Points	Real-time Eye AF	Real-time Tracking	Silent Shooting	Touch Focus/Shutter
--	------------------	-------------------------	--	---------------------	-----------------------	--------------------	------------------------

 **4D FOCUS**

 **Exmor**
CMOS Sensor

BIONZ X

XGA OLED
Tru-Finder

4K
HDR



FE 55mm F1.8 ZA (SEL55F18Z), 1/640., F2.8, ISO 200



E PZ 16-50mm F3.5-5.6 OSS, 1/250., F5.6, ISO 200

Hold onto your subject

Precision focus and speedy autofocus response are the keys to both exciting action shots and captivating portraits. The α 6400's new-generation, AI-assisted AF and tracking systems reliably deliver.

Focus on the eyes

The Real-time Eye AF feature helps you take better portrait shots by automatically recognising and focusing on the eyes of your subjects when you half-press the shutter. The camera maintains a stable focus even when part of the face is hidden, the face is backlit or the subject is facing downwards, and when AF-C is set it can keep tracking the eyes even when the subject is moving*. For greater flexibility in your photo's composition, you can specify either the left eye, the right eye, or auto.

* Real-time Eye AF may not work as well as intended, depending on type of shooting scene and conditions.

Keep track of the action

Real-time Tracking uses a smart new subject recognition algorithm to acquire and persistently track your subject in real time by processing spatial information based on colour, pattern and subject distance, and AI information based on face and eye data. Because you can select any subject to be tracked while the shutter button is half-pressed* you can concentrate on composing your shot, with more flexibility in framing. Focus and tracking can also be initiated for any subject visible in the monitor by simply touching the target subject on the monitor.



* "Tracking" must be enabled via the menu beforehand.

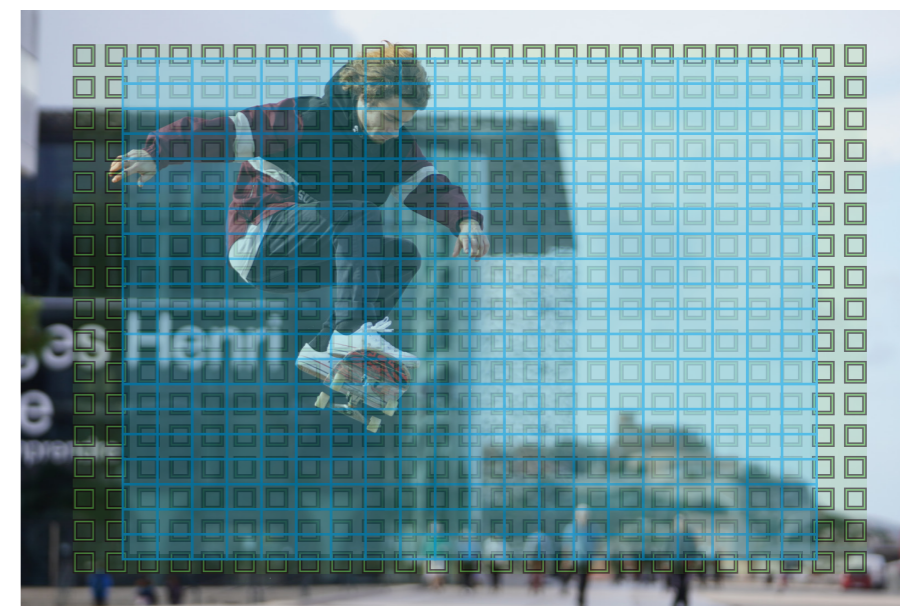


Freeze the moment

The camera's Fast Hybrid AF system combines the best of phase-detection AF and contrast-detection AF to achieve highly accurate target acquisition and phenomenally fast 0.02-second* AF speed. The AF sensor draws on technology inherited from Sony's full-frame cameras, using 425 phase-detection points that are widely and densely spread across the focus area, along with 425 contrast-detection points for increased detection accuracy.

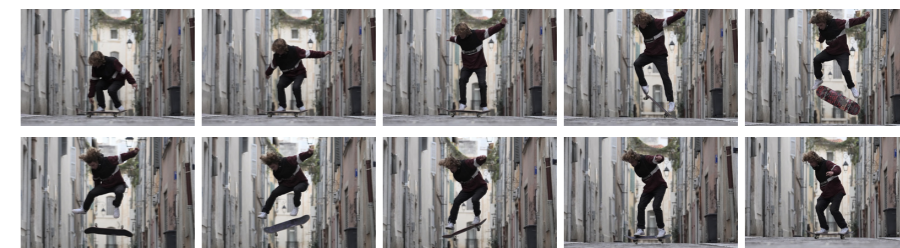
* Based on Sony research, measured using CIPA-compliant guidelines, and internal measurement method with an E 18-135mm F3.5-5.6 OSS lens mounted, Pre-AF off and viewfinder in use.

-  Phase-detection AF coverage (425 points)
-  Contrast-detection AF coverage (425 points)



Never miss, with powerful continuous shooting

Never miss a moment of the action thanks to fast internal processing and high-capacity buffer memory. Fire off shots at up to 11fps¹ with minimal display lag (or up to 8fps² with AF/AE tracking in silent mode), and take up to 116 shots³ in JPEG (Standard) in one continuous burst.



¹ In "Hi+" mode. Maximum fps will depend on camera settings.
² Maximum fps will depend on camera settings. Some distortion may occur with fast-moving subjects or if the camera is moved sideways rapidly while shooting.
³ With "Hi" continuous shooting mode. Sony internal measurement.



FE 55mm F1.8 ZA (SEL55F18Z), 1/500 sec., F1.8, ISO 200

Enjoy clear, beautiful images

Capture the special moments of your day in stunning detail and keep the memories vivid, relying on outstanding performance and features inherited from Sony's full-frame cameras.

Capture all the beauty you see



E 16-70mm F4 ZA OSS (SEL1670Z), 1/13 sec., F5, ISO 6400

© Rudy Ricciotti & Roland Carta, architects

Thanks to the camera's large APS-C size sensor working with the latest image-processing technology, you can confidently shoot the scenes you come across in your everyday life - from cityscapes and sunsets to portraits and self-portraits. You'll be assured of natural, lifelike colours and detailed textures - images that remain crisp and clear even when shot in dim light.



ISO 1600



ISO 6400



E 16-70mm F4 ZA OSS (SEL1670Z), 1/100 sec., F5.6, ISO 320

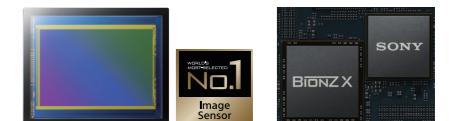
© Alfonso Femia, architect

Standard ISO covers the range from ISO 100 to 32000 (expandable up to ISO 102400 when shooting still images), with excellent noise reduction at medium and high sensitivities. Improvements in Detail Reproduction Technology and Area-specific Noise Reduction contribute to better texture reproduction, while enhancements to the image-processing algorithm result in improved skin tones in portraits.

Exmor CMOS Sensor BIONZ X

The APS-C Exmor™ CMOS image sensor, with approx. 24.2 effective megapixels, works with a front-end LSI supporting the new-generation BIONZ X™ image processing engine to achieve improved processing speeds up to 1.8 times* as fast as previously.

* Compared to α6300 in Sony research.



No. 1 image sensor manufacturer for digital cameras and video recorders. Based on Sony research - April 2017 to March 2018. (over 50% market share).

Make great-looking movies

Clear, beautiful-looking movies and vlogs can be yours thanks to the α 6400's smart, reliable AF system, its high-resolution 4K recording capabilities and its array of helpful movie-making features.

Leave focus up to the camera



Enhanced Fast Hybrid AF works reliably to keep your main subject in constant smooth focus, so you can concentrate on movie-making or vlogging without worrying about poor focus ruining your movie. Effective use of the focal plane phase-detection system results in more stable AF, and sharp focus can be maintained even when something crosses in front of the main subject. You can adjust AF tracking sensitivity for either stable focus or responsive refocusing, depending on the nature of the scene, and Touch Tracking* lets you initiate tracking of a moving subject simply by touching the LCD screen.

* Must be enabled via the menu beforehand.

Stunning clarity with 4K HDR (HLG) movie recording^{1,2}



To give your movies more realistic depth and better overall image quality, 4K movie recording¹ with full pixel readout and no pixel binning enables oversampling with approx. 2.4x³ as much information as is required for 4K (QFHD: 3840 x 2160), adding up to the equivalent of 6K. The maximum native ISO sensitivity has been increased to ISO 32000, HLG profiles² are available, and the camera's improved noise suppression helps produce cleaner, clearer images even in dark settings.

*1. A Class 10 or higher SDHC/SDXC card is required for XAVC S format movie recording. UHS speed Class 3 or higher is required for 100 Mbps recording.

*2. Connect this product to an HDR (HLG) compatible Sony TV via a USB cable when displaying HDR (HLG) movies.

*3. 24p recording. Approx. 1.6 times for 30p recording.

Rely on sophisticated features for better movie-making



S-Gamut3.Cine/S-Log3

After colour grading

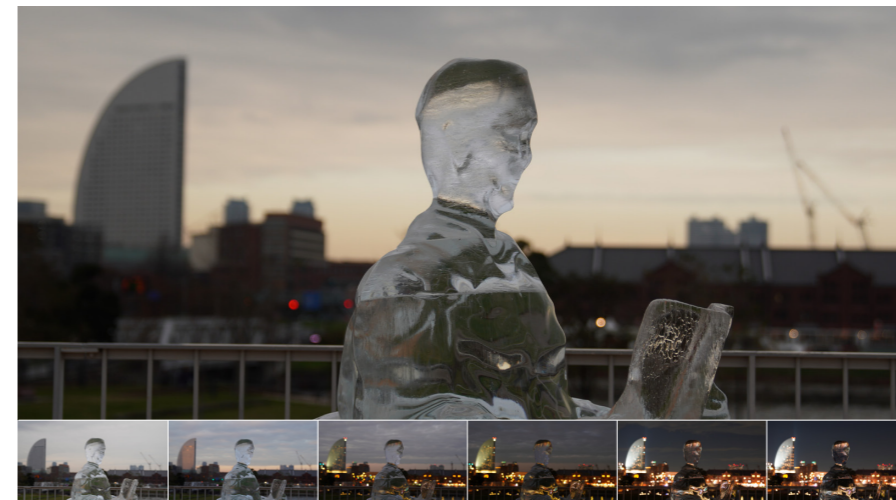
*1. S-Log2 and S-Log3 are premised on processing pictures.

*2. The Gamma Display Assist function is not available for monitoring on external displays and television sets.

*3. Sound recording is not possible. A Class 10 or above SDHC/SDXC card is required.

- S-Log2 and S-Log3 (with 14-stop latitude) Gamma curves¹
- Gamma Display Assist to allow monitoring of natural-looking footage²
- Slow & Quick Motion³
- Proxy recording for easier preview and pre-editing

Produce evocative time-lapse movies



Interval recording can now be performed within the camera, and the resulting still images can be edited into a time-lapse movie on a computer using the latest version of Imaging Edge™ "Viewer" and PlayMemories Home™. A mobile battery for USB power supply can enable worry-free outdoor and/or extended shooting.

Workflow: Creating a time-lapse movie

Camera: Interval recording and preview



Computer: Select images and produce movie

Vlog your world and explore your creativity



The camera's 180°-tiltable LCD monitor helps when you're framing your vlog movies, and you can add creative touches with Slow & Quick Motion¹ recording or high-quality super-slow-motion footage in XAVC S format.² For sound recording, besides a built-in external microphone jack there is also an optional XLR adaptor (sold separately) to connect pro-level microphones to give you better audio quality.

*1. Sound recording is not possible. A Class 10 or above SDHC/SDXC card is required.

*2. A Class 10 or higher SDHC/SDXC card is required for XAVC S format movie recording. UHS speed Class 3 or higher is required for 100 Mbps recording.

Imaging Edge applications

The Imaging Edge applications help you raise your photography to the next level while making day-to-day operations more convenient. "Remote" and "Viewer" give you remote control and monitoring ability from your PC screen as well as preview, rating and selection features you can use with large image libraries. And

"Edit" provides RAW editing functions to turn Sony RAW files into high-quality photos for delivery. "Imaging Edge Mobile" enables remote control and file transfer¹ including 4K movies².

*1. Availability of transfer / playback depends on the performance of the smartphone.
*2. A Class 10 or higher SDHC/SDXC card is required for XAVC S format movie recording. UHS speed Class 3 or higher is required for 100 Mbps recording.



Adapt to your shooting style

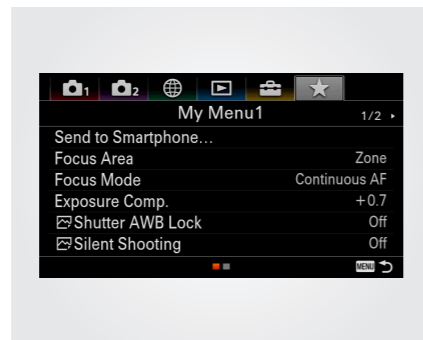
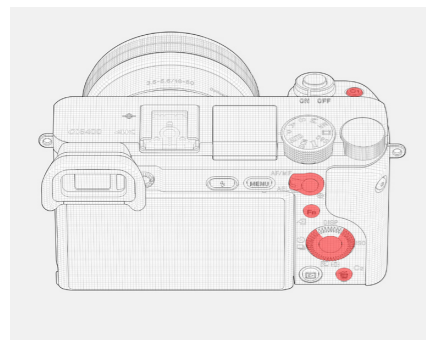
The α6400 is designed to give you greater control when you're shooting and better customisation to your shooting style.

Enjoy simple, convenient shooting



A high-contrast OLED viewfinder and high-resolution LCD monitor enable clear viewing, and the monitor tilts a full 180° upwards to help you frame selfie shots and vlog sessions. The monitor's Touch Focus, Touch Shutter, Touch Pad and Touch Tracking functions give you intuitive, fingertip control over common operations.

Customise your camera



The camera's eight keys and controls can be custom-assigned to commonly used functions, with a new intuitive graphic display to help you keep track. Functions can also be assigned to the control dial and wheel with the new My Dial feature, while My Menu allows the flexible assignment of 30 menu items.

Share stills and movies more easily



Built-in Wi-Fi® means you can send stills or movies directly to a smartphone or tablet, for instant sharing on social media. Connect to NFC™-enabled devices with a single touch, or use a QR code for other devices. When paired with the new Imaging Edge Mobile™ app you can record location data from the mobile device onto the images.*2

*1. The most recent version is required.
*2. Can be connected via Bluetooth with smartphones featuring (as of the date of release): Android (Android 6.0 or later, Bluetooth 4.0 or later), iOS (iOS 11.4 or later, Bluetooth 4.0 or later)

Take advantage of versatile features

- Rating function
- Protect function
- Tethered shooting
- AWB Lock function
- Power supply via USB
- Durability for up to 200,000 shutter cycles*1
- Dust- and moisture-resistant*2
- Magnesium alloy covers (front and top)

*1. With the electronic front curtain shutter, under internal test conditions of Sony.
*2. Not guaranteed to be 100% dust and moisture proof.

Explore more

Take a look at the camera's lenses and accessories and explore the camera's controls.

Lenses



<https://www.sony.net/ilc/lenses>



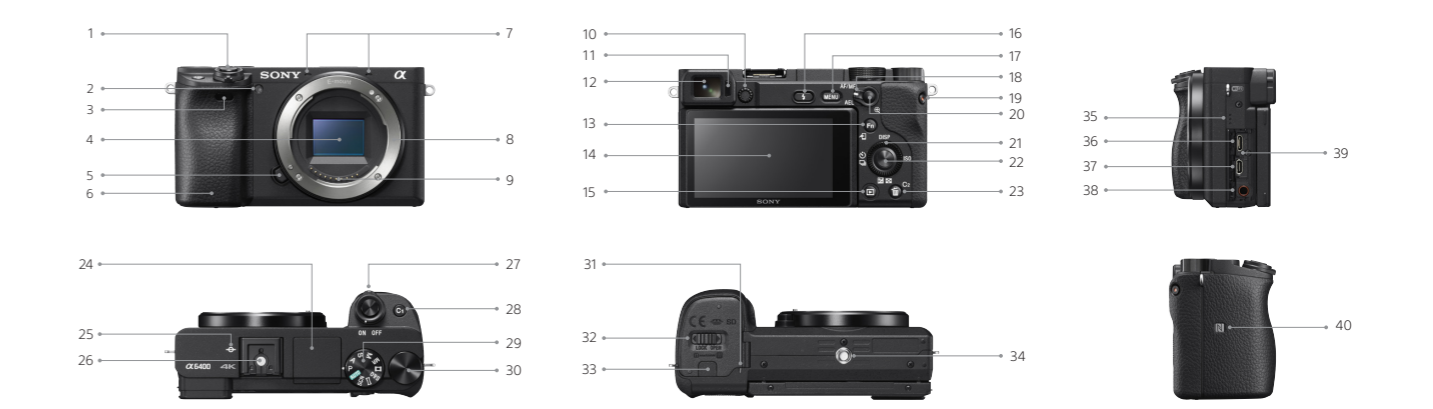
Accessories



<https://www.sony.net/ilc/accy>



Controls



- | | | | |
|----------------------------------|--|---------------------------------------|---|
| 1 Shutter button | 12 Viewfinder | 21 Control wheel | 32 Battery/Memory card cover |
| 2 Self-timer lamp/AF illuminator | 13 For shooting: Fn button | 22 Center button | 33 Connection plate cover |
| 3 Remote sensor | For viewing: Fn button | 23 C2 (Custom 2) button/Delete button | 34 Tripod socket hole |
| 4 Image sensor | For viewing: Send to Smartphone button | 24 Flash | 35 Speaker |
| 5 Lens release button | 14 Monitor | 25 Image sensor position mark | 36 Multi/Micro USB Terminal (Supports Micro USB compatible devices) |
| 6 Wi-Fi antenna (built-in) | 15 Playback button | 26 Multi Interface Shoe | 37 HDMI micro jack |
| 7 Microphone | 16 Flash pop-up button | 27 ON/OFF (Power) switch | 38 Microphone jack |
| 8 Mount | 17 MENU button | 28 C1 (Custom 1) button | 39 Charge lamp |
| 9 Lens contacts | 18 AF/MF/AEL switch lever | 29 Mode dial | 40 N mark |
| 10 Diopter-adjustment dial | 19 MOVIE button | 30 Control dial | |
| 11 Eye sensor | 20 For shooting: AF/MF button/AEL button | 31 Access lamp | |
| | For viewing: Enlarge button | | |