

FUJIFILM
Value from Innovation



You've never printed
like this before.



instax mini Link

FILM SIZE

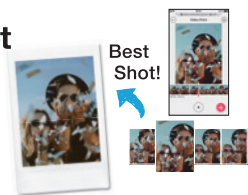


Print photos and videos easily from your smartphone!

Print Mode

Video Print

Print your favorite frame from a video. Sometimes the best photos are action shots.



Instax Camera

To get your best shot, tilt the printer to zoom in and out then press the power button to take a photo.



Simple Print

Easily edit and print photos from your smartphone.



Flip the printer vertically or horizontally to change the app mode.

Vertical



LED light turns blue when in **Print Mode**

Horizontal



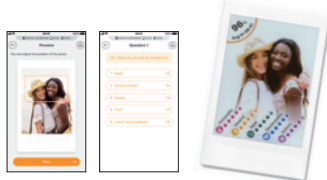
LED light turns orange when in **Fun Mode**

Print with friends for even more fun!

Fun Mode

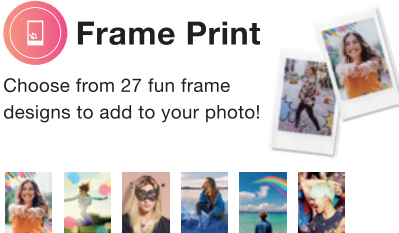
Match Test

This mode is guaranteed fun! Simply take a photo and select the 'take the test' function, or challenge yourself to a quiz in the 'leave it to fate' function.



Frame Print

Choose from 27 fun frame designs to add to your photo!



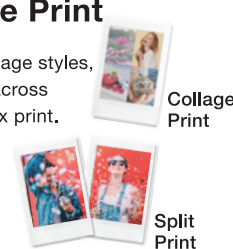
Party Print

Connect with up to five friends to create a unique instax print! Turn on Surprise Mode to keep the final image a secret until it develops.



Collage Print

Choose from 14 collage styles, or split your photo across more than one instax print.



* Images are for illustrative purposes only.

High speed, continuous printing

The photo prints in just 12 seconds after the image is sent from your smartphone. Approximately 100 photos can be printed continuously (when fully charged).

*Varies depending on usage conditions.



Reprint

Turn the printer upside down and press the power button to reprint your last instax photo!

*The last photo printed is automatically erased when the printer is turned off.



Easily print images taken with your Fujifilm X Series digital camera* with the instax mini Link.



For more information, please visit the instax mini Link dedicated site.

*All X Series cameras that are compatible with the FUJIFILM Camera Remote app are supported.

SPECIFICATIONS

Recording method	3-color exposure with OLED
Film used	FUJIFILM INSTAX Mini Instant Film (sold separately)
Number of films	10 films/pack
Film size	86 mm × 54 mm
Image size	62 mm × 46 mm/2.4 in. × 1.8 in.
Supported image size	800 × 600 dots
Printing resolution	12.5 dots/mm (318 dpi, 80 μm dot pitch)
Printing levels	256 levels per color (RGB)
Interface	Standard compliance: Bluetooth Ver. 4.2 (BLE)
Supported image format	JPEG, PNG, HEIF
Printing time	Image recording - photo output (fed out): Approximately 12 sec.
Approximate printing capacity	Approximately 100 prints (from full charge) * The number of prints depends on the usage conditions.
Power supply	Lithium ion battery (internal type: not removable)
Charging time	Approximately 80 to 120 minutes (Charging time depends on the temperature and battery remaining level)
Power consumption	Approximately 3 W
Operating environment	Temperature: +5 °C to +40 °C (+41 °F to +104 °F) Humidity: 20% to 80% (no condensation)
Main unit dimensions	90.3 mm × 34.6 mm × 124.5 mm/3.5 in. × 1.3 in. × 4.9 in. (excluding projecting parts)*
Main unit mass	Approximately 209 g/7.3 oz (excluding film pack)
Supplied accessory	USB cable

Color



DUSKY PINK

ASH WHITE

DARK DENIM

* Specifications above are subject to change for improvement.